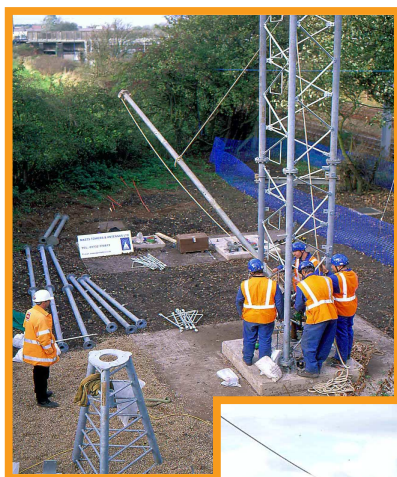


Rail – GSM R



Swann Services Group has designed, manufactured and installed various towers, foundations and antenna systems to support the Fixed Bearer (FB) and Global System for Mobile Railway Communications (GSM-R). Our work has also included the erection of numerous towers along the side of railways as part of the cellular activities.

A range of towers have been produced, including site share versions for future 3rd party operator installation. All towers incorporate standard climbing facilities, including a fall arrest system; lightning finial & anti-climb deterrents.

For the tower earth grounding system Swann Services have supplied & installed a fast transient mast earth & traction bonding system, including isolating transformers on the RF transmission line.

Towers can be installed either by crane or lifting derrick. The use of the derrick system eliminates the need for possession or isolation.

The majority of Swann Services installation technicians have been PTS trained to allow them to work on the railway. Further training has been undertaken as part of the Channel Tunnel requirements.