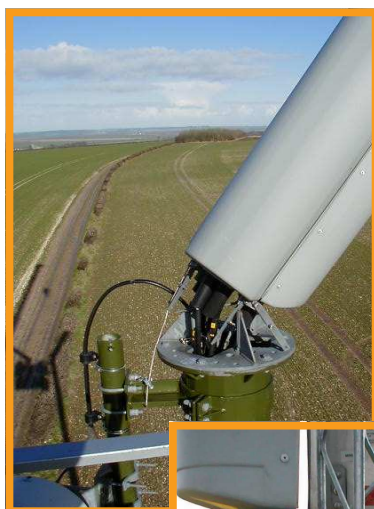


Cluster Array - Failure



Following a reported failure at a base station site, a Swann Services team found a partial collapse of the column head-frame supporting the cluster of sector antennas. A preliminary inspection identified a potential fault with a structural member within the head-frame that could effect other sites.

Swann Services was retained to identify similar installations around the UK and to fit restraining devices that would prevent any further failures resulting in antennas falling to the ground.

A programme of work was quickly established with a team identifying potential problematic sites working in conjunction with the network operator and the original equipment supplier. Over 100 sites were visited and surveyed in a three week period. Specially designed restraining strops were attached as an interim safety measure whilst new head-frames were designed and fabricated. During this survey a small number of other sites were identified as having suffered, or were likely to suffer, similar failures.

Swann Consultancy Group was commissioned to design the replacement head-frame by the original equipment supplier. Subsequently the network operator contracted Swann Services to carry out the replacement works on sites.