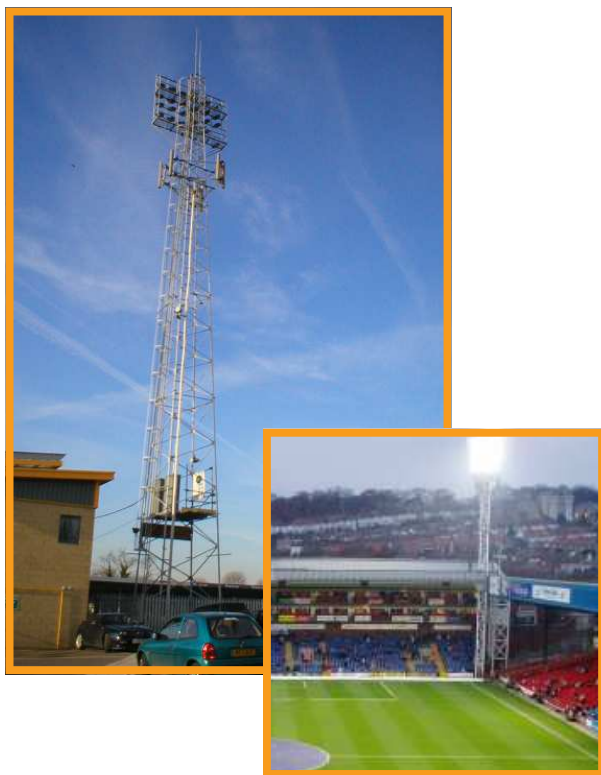


Cellular Site Sharing



As part of the rollout of the UK cellular networks, Swann Services has undertaken a number of assessments on behalf of clients wishing to install base station antennas on existing floodlighting towers at football and rugby clubs.

With the continued expansion of the cellular networks, the sharing of existing structures, where this is possible, has benefits over the development of a new tower. This is particularly the case where the requirement is for a site in an urban centre.

Over recent years the Swann Consulting Group has analysed a range of floodlight towers from traditional tapered, angle towers to more modern structures, features of newly developed stadiums. At one Premier League ground, Swann undertook the analysis of a 35m floodlighting structure which was unusual in that it was propped at an intermediate level by the roof of one of the stands.

The survey and analysis of floodlighting structures is a specialist area for the Swann Group. With the safety of the public paramount, owners have a responsibility to ensure that all structures in the grounds are safe and regularly inspected, not only when there is a potential requirement for income generation through site sharing. During one survey our engineers found the grounds man had compromised the safety of a floodlighting tower by removing a bracing at the base so he could store his mower underneath it!